

# Fall 2023 Hospital Safety Grade Town Hall Call

The slides and recording will be posted after the presentation at:  
<https://www.hospitalsafetygrade.org/for-hospitals/key-dates-and-information>

September 28, 2023



# What is the Leapfrog Hospital Safety Grade?

---

The Leapfrog Hospital Safety Grade is an A, B, C, D, or F letter grade reflecting how safe hospitals are for patients.

The Leapfrog Hospital Safety Grade launched in June 2012.

The Grade is issued two times per year: Spring and Fall. This fall will be the 24th release.

More information is available at [www.HospitalSafetyGrade.org](http://www.HospitalSafetyGrade.org)

# Who is eligible for a Leapfrog Hospital Safety Grade?

---

General acute care hospitals with enough publicly reported data

- Hospitals missing measure scores for more than **6** process/structural measures OR more than **5** outcome measures or **PSI 90** do not receive a grade. A measure score for PSI 90 is required.

The Leapfrog Group is not able to calculate a Hospital Safety Grade for certain types of hospitals due to missing data:

- Critical access hospitals
- PPS-exempt hospitals (i.e., cancer)
- VA Hospitals
- Indian Health Services
- Specialty hospitals



# Measures used in the Leapfrog Hospital Safety Grade

# Measure Selection Criteria

---

Measures are publicly-reported from national data sources, which reflect individual hospital performance, including:

- Leapfrog Hospital Survey
- Centers for Medicare and Medicaid Services data sets

Measures are endorsed or in use by a national measurement entity

Measures are linked to patient safety (“freedom from harm”)

- Directly quantifying patient safety events
- Assessing processes that lead to better outcomes
- Identified by experts as important to patient safety

# Fall 2023 Process and Structural Measures

Measure Name	Primary Data Source	Reporting Period	Secondary Data Source	Reporting Period
Computerized Physician Order Entry (CPOE)	2023 Leapfrog Hospital Survey	2023	Imputation Model Applied	N/A
Bar Code Medication Administration (BCMA)	2023 Leapfrog Hospital Survey	2023	Imputation Model Applied	N/A
ICU Physician Staffing (IPS)	2023 Leapfrog Hospital Survey	2023	Imputation Model Applied	N/A
Safe Practice 1: Culture of Leadership Structures and Systems	2023 Leapfrog Hospital Survey	2023	N/A	N/A
Safe Practice 2: Culture Measurement, Feedback & Intervention	2023 Leapfrog Hospital Survey	2023	N/A	N/A
Total Nursing Care Hours per Patient Day	2023 Leapfrog Hospital Survey	2023	N/A	N/A
Hand Hygiene	2023 Leapfrog Hospital Survey	2023	Imputation Model Applied	N/A
H-COMP-1: Nurse Communication	CMS	10/01/2021 - 09/30/2022	N/A	N/A
H-COMP-2: Doctor Communication	CMS	10/01/2021 - 09/30/2022	N/A	N/A
H-COMP-3: Staff Responsiveness	CMS	10/01/2021 - 09/30/2022	N/A	N/A
H-COMP-5: Communication about Medicines	CMS	10/01/2021 - 09/30/2022	N/A	N/A
H-COMP-6: Discharge Information	CMS	10/01/2021 - 09/30/2022	N/A	N/A

# Fall 2023 Outcome Measures

Measure Name	Primary Data Source	Reporting Period	Secondary Data Source	Reporting Period
Foreign Object Retained	CMS	07/01/2019 - 12/31/2019 AND 07/01/2020 - 06/30/2021	N/A	N/A
Air Embolism	CMS	07/01/2019 - 12/31/2019 AND 07/01/2020 - 06/30/2021	N/A	N/A
Falls and Trauma	CMS	07/01/2019 - 12/31/2019 AND 07/01/2020 - 06/30/2021	N/A	N/A
CLABSI	2023 Leapfrog Hospital Survey	01/01/2022 - 12/31/2022	CMS	10/01/2021 - 09/30/2022
CAUTI	2023 Leapfrog Hospital Survey	01/01/2022 - 12/31/2022	CMS	10/01/2021 - 09/30/2022
SSI: Colon	2023 Leapfrog Hospital Survey	01/01/2022 - 12/31/2022	CMS	10/01/2021 - 09/30/2022
MRSA	2023 Leapfrog Hospital Survey	01/01/2022 - 12/31/2022	CMS	10/01/2021 - 09/30/2022
C. Diff.	2023 Leapfrog Hospital Survey	01/01/2022 - 12/31/2022	CMS	10/01/2021 - 09/30/2022
PSI 4: Death rate among surgical inpatients with serious treatable conditions	CMS	07/01/2019 - 12/31/2019 AND 07/01/2020 - 06/30/2021	N/A	N/A
CMS Medicare PSI 90: Patient safety and adverse events composite*	CMS	07/01/2019 - 12/31/2019 AND 07/01/2020 - 06/30/2021	N/A	N/A

# Fall 2023 Reporting Periods

---

## 2023 Leapfrog Hospital Results

- CPOE, BCMA, IPS, the 2 NQF Safe Practices, Total Nursing Care Hours per Patient Day, and Hand Hygiene will be displayed as “2023”
- CLABSI, CAUTI, MRSA, C. Diff, and SSI Colon will be: 01/01/2022 - 12/31/2022

## CMS Data

- 5 Patient Experience measures and 5 infection measures (*for hospitals that did not report via the Leapfrog Hospital Survey*): 10/01/2021 - 09/30/2022
- 3 HAC measures, PSI 4, and PSI 90 (same data used in spring 2023 Safety Grade): 07/01/2019 - 12/31/2019 and 07/01/2020 - 6/30/2021

# Imputation Model

## as a Secondary Data Source

# Overview

---

- Imputation Method for CPOE, BCMA, Hand Hygiene, and IPS
  - **STEP 1:** Use A Hospital's Most Recent Score on the Measure from past four rounds of Safety Grade (i.e., spring 2023, fall 2022, spring 2022, fall 2021)
  - **STEP 2:** Use the Mean of the Scores Assigned to Other Similar Hospitals in the U.S. (does not apply to IPS)

# Step 1: Impute the hospital's most recent score on the measure

## Applies to CPOE, BCMA, HH and IPS

---

If the hospital had a score assigned by Leapfrog in the previous four rounds of grades, the hospital is assigned the most recent score on that measure in the current Hospital Safety Grade.

### Example of Step 1 (from fall 2023):

A hospital did not submit a 2023 Leapfrog Hospital Survey by the Data Snapshot Date. The hospital's most recent measure scores for the three measures come from the fall 2021 Hospital Safety Grade, where the hospital's scores for CPOE, BCMA, HH, and IPS were assigned by Leapfrog based on their 2021 Leapfrog Survey. In the spring 2022 Hospital Safety Grade, the hospital's CPOE score was 45, BCMA score was 45, Hand Hygiene was 100, and IPS score was 85. For the fall 2023 Hospital Safety Grade, the score of 45 is used for CPOE, 45 is used for BCMA, 100 is used for Hand Hygiene and 85 is used for IPS.

# Step 2: Use of the mean of the scores assigned to similar hospitals

## Applies to CPOE, BCMA, and HH (not IPS)

---

The hospital is assigned to a cohort of other similar hospitals using three or four hospital characteristics obtained from the most recent CMS Impact File and Leapfrog Hospital Survey:

1. Urban/rural status (CMS Impact File)
2. Safety net status (CMS Impact File)
3. Number of beds (CMS Impact File)
4. Teaching status (only used for urban cohorts; Leapfrog Hospital Survey Results are the primary data source and CMS Impact File is the secondary data source)

## Step 2 (continued)

---

The hospital is then assigned the lower of two possible mean scores based on their cohort's performance:

- Mean of current and recent scores
- Mean of scores obtained in each hospital's first year of reporting via the Leapfrog Hospital Survey

The mean current and recent scores are calculated based on hospitals that have a score in the current round (i.e., fall 2023) from either Leapfrog's [publicly reported](#) Survey Results or Step 1 of the imputation model. The first means score only includes past and current performance on the Leapfrog Hospital Survey, without imputation.

### Example of Step 2 (from fall 2023):

The hospital is missing scores for CPOE, BCMA, HH, and IPS because they have never submitted a Leapfrog Hospital Survey. In fact, due to missing HCAHPS measures and the IPS measure in past rounds, they have never been eligible for a Hospital Safety Grade in past rounds. Therefore, in the fall 2023 Hospital Safety Grade, the hospital will be assigned scores based on the mean CPOE, HH and BCMA scores of other similar hospitals in the U.S. and may receive a Hospital Safety Grade for the first time.

# Cohort Scores

Mean scores for each of the 12 cohorts are published in the Safety Grade Methodology document each round (spring 2023 example in the table below – all cohort scores will be updated for fall 2023).

Cohort #	Urban/Rural Status	Safety Net Status	Number of Beds	Teaching Status	Step 2 CPOE Score (Mean of Cohort)	Step 2 BCMA Score (Mean of Cohort)	Step 2 Hand Hygiene Score (Mean of Cohort)
Cohort 1	Rural	Non-Safety Net	Fewer than 100 beds	N/A	75	79	50
Cohort 2	Rural	Non-Safety Net	100 or more beds	N/A	79	83	53
Cohort 3	Rural	Safety Net	Fewer than 100 beds	N/A	80	79	48
Cohort 4	Rural	Safety Net	100 or more beds	N/A	77	77	56
Cohort 5	Urban	Non-Safety Net	Fewer than 100 beds	Non-Teaching	85	85	57
Cohort 6	Urban	Non-Safety Net	100 or more beds	Non-Teaching	86	84	57
Cohort 7	Urban	Non-Safety Net	Fewer than 100 beds	Teaching	78	85	65
Cohort 8	Urban	Non-Safety Net	100 or more beds	Teaching	88	85	56
Cohort 9	Urban	Safety Net	Fewer than 100 beds	Non-Teaching	84	78	70
Cohort 10	Urban	Safety Net	100 or more beds	Non-Teaching	76	80	62
Cohort 11	Urban	Safety Net	Fewer than 100 beds	Teaching	77	78	43
Cohort 12	Urban	Safety Net	100 or more beds	Teaching	90	80	55

# New in fall 2023: Step 2 Imputation for IPS

---

- The CMS Cost Report will be used as a secondary data source for the ICU Physician Staffing (IPS) measure among hospitals eligible for Step 2 Imputation
- This applies to hospitals that have not submitted a 2023, 2022, or 2021 Leapfrog Hospital Survey
- ICU designation (i.e., operating a medical ICU, surgical ICU, or pediatric ICU) will be determined by Leapfrog based on the number of medical, surgical and/or pediatric ICU beds reported in Worksheet S-3 Part 1 of the hospital's most recent CMS Cost Report. Hospitals that are determined to have one or more medical, surgical, and/or pediatric ICU beds will be assigned the same point value (5 points) as those hospitals that earned Limited Achievement on Leapfrog's IPS Standard.



# Scoring Overview

# Calculating Z-Scores

---

- Standardizes data from individual measures with different scales to allow for comparisons (e.g., a linear mean score of 90 on H-COMP-1: Nurse Communication and a CLABSI SIR of 0.870).
- Indicate to a hospital whether their measure score is above, below, or equal to the average hospital.
- To calculate each measure's Z-Score:

- **Process/structural measures:**

$$\frac{\text{Hospital's Measure Score} - \text{Mean}}{\text{Standard Deviation}}$$

- **Outcome Measures:**

$$\frac{\text{Mean} - \text{Hospital's Measure Score}}{\text{Standard Deviation}}$$

# Calculating Standard Measure Weights

---

Each measure included in the Safety Grade is assigned a standard measure weight using four criteria:

- Strength of evidence (rating of 1 or 2)
- Opportunity (rating of 1-3), based on coefficient of variation
- Impact (rating of 1, 2, 3) based on:
  - number of patients possibly affected by the event (0, 1, 2, 3)
  - severity of harm to individual patients (1, 2, 3)
- Number of measures (number of measures equals 1 for all measures except for PSI 90 where the number of measures equals 10)

**Measure Weight Score = [Evidence + (Opportunity x Impact x Number of Measures)]**

# Dealing with Missing Data

---

If a hospital is missing a measure score for any measure, the standard weight of that measure is redistributed to the other measures in the same measure domain. The new weight for each measure within the domain is calculated by re-apportioning the standard weight assigned to the measure with the missing score to other measures within the same domain.

For example, if a hospital is missing a measure score for ICU Physician Staffing because the hospital does not operate an adult or pediatric medical and/or surgical ICU, the standard weight will be re-apportioned to the remaining 11 measures within the process/structural measure domain.

To calculate the new weight of each of the remaining 11 measures in the process/structural measure domain, hospitals can use the formula below or use the Leapfrog Hospital Safety Grade Calculator ©, which can be found on the Safety Grade Review Website. Note that each domain contributes to 50% of the overall letter grade.

$$[\text{Standard measure weight} / (\text{sum of standard weights for the remaining 11 measures in the process/structural measure domain})] * 50\% = \text{updated measure weight}$$

# Calculating the Overall Numerical Score

---

1. Multiply the z-score for each measure by the measure weight
2. Sum the weighted z-scores from step 1
3. If a measure score is missing, the weight for that measure is re-apportioned to other measures within the same domain
4. Add 3.0 to the final numerical (this step helps to avoid possible confusion with interpreting negative scores)

$$3.0 + \text{CPOE z-score} \times \text{CPOE weight} + \text{IPS z-score} \times \text{IPS weight} + \\ \text{CLABSI z-score} \times \text{CLABSI weight} \dots \text{etc.}$$

# Hospital Safety Grade Calculator

Measure Domain	Measure	Enter Your Hospital's Score Here (Do NOT Leave Blanks)	Mean	Standard Deviation	Z-Score <sup>1</sup>		Inputs to Weighting Individual Measures <sup>2</sup>				Weight <sup>3</sup>		Weighted Measure Score (Modified Z-Score x Final Weight)
					Original Z-Score	Modified Z-Score	Evidence	Opportunity	Impact	Number of Component Measures	Standard Weight	Final Weight (N/A redistributes)	
Process/Structural Measures	Computerized Physician Order Entry (CPOE)		85.73	22.55	-3.8022	-3.8022	2	1.26	3	1	5.9%	5.9%	-0.2226
	Bar Code Medication Administration (BCMA)		83.21	21.58	-3.8553	-3.8553	2	1.26	3	1	5.8%	5.8%	-0.2253
	ICU Physician Staffing (IPS)		62.75	43.31	-1.4488	-1.4488	2	1.69	3	1	7.2%	7.2%	-0.1036
	Safe Practice 1: Culture of Leadership Structures and Systems		116.84	7.46	-15.6601	-5.0000	1	1.06	2	1	3.2%	3.2%	-0.1582
	Safe Practice 2: Culture Measurement, Feedback, & Intervention		116.54	12.74	-9.1489	-5.0000	1	1.11	2	1	3.3%	3.3%	-0.1628
	Safe Practice 9: Nursing Workforce		98.18	7.06	-13.9022	-5.0000	1	1.07	3	1	4.3%	4.3%	-0.2132
	Hand Hygiene		74.37	32.80	-2.2677	-2.2677	2	1.44	2	1	4.9%	4.9%	-0.1120
	H-COMP-1: Nurse Communication		91.11	2.22	-40.9906	-5.0000	1	1.02	2	1	3.1%	3.1%	-0.1542
	H-COMP-2: Doctor Communication		91.00	2.11	-43.0334	-5.0000	1	1.02	2	1	3.1%	3.1%	-0.1541
	H-COMP-3: Staff Responsiveness		84.38	3.59	-23.4927	-5.0000	1	1.04	2	1	3.1%	3.1%	-0.1560
	H-COMP-5: Communication about Medicines		77.67	3.58	-21.6805	-5.0000	1	1.05	2	1	3.1%	3.1%	-0.1564
	H-COMP-6: Discharge Information		86.52	3.30	-26.1921	-5.0000	1	1.04	2	1	3.1%	3.1%	-0.1556
Outcome Measures	Foreign Object Retained		0.02	0.06	0.2977	0.2977	1	3.00	2	1	4.3%	4.3%	0.0128
	Air Embolism		0.0004	0.004	0.1071	0.1071	1	3.00	1	1	2.5%	2.5%	0.0026
	Falls and Trauma		0.42	0.38	1.1045	1.1045	2	1.91	3	1	4.7%	4.7%	0.0523
	CLABSI		0.81	0.67	1.2035	1.2035	2	1.83	3	1	4.6%	4.6%	0.0553
	CAUTI		0.75	0.57	1.3160	1.3160	2	1.76	3	1	4.5%	4.5%	0.0587
	SSI: Colon		0.80	0.65	1.2292	1.2292	2	1.81	2	1	3.4%	3.4%	0.0424
	MRSA		0.84	0.65	1.2856	1.2856	2	1.78	3	1	4.5%	4.5%	0.0578
	C. Diff.		0.54	0.36	1.4799	1.4799	2	1.68	3	1	4.3%	4.3%	0.0638
	PSI 4: Death rate among surgical inpatients with serious treatable conditions		159.71	18.33	8.7137	8.7137	1	1.11	2	1	2.0%	2.0%	0.1725
	CMS Medicare PSI 90: Patient safety and adverse events composite		1.00	0.19	5.1983	5.1983	1	1.19	2	10	15.2%	15.2%	0.7919
Process Measure Domain Score:		Will populate after entering all data.											
Outcome Measure Domain Score:		Will populate after entering all data.											
Process/Outcome Domains - Combined Score:		Will populate after entering all data.											
Normalized Numerical Score:		Will populate after entering all data.											
Hospital Safety Grade (Letter Grade):		Will not be calculated until after the Safety Grade Review Period. Hospitals will be notified via email when the letter grades are posted.											



# Important Dates and Reviewing Data

# Data Snapshot Dates

---

The data snapshot date is the date that Leapfrog will download the data published by CMS or submitted to Leapfrog via the Hospital Survey to calculate Leapfrog Hospital Safety Grades.

All data, including Leapfrog Hospital Survey Results, must be finalized by these dates:

- Spring Data Snapshot Date: January 31
- Fall Data Snapshot Date: August 31

Updates to any of the data published after these dates are not used to calculate the Safety Grade.

The Leapfrog Hospital Safety Grade relies on publicly available data that hospitals have had the opportunity to review for accuracy. Therefore, Leapfrog **does not allow hospitals to make updates to their data following the Data Snapshot Date.**

# Safety Grade Timeline

---

Following each Data Snapshot Date:

- **Courtesy Review Period**: As a courtesy to hospitals, Leapfrog will hold a Courtesy Safety Grade Review Period before the public release of each Leapfrog Hospital Safety Grade update. The Review Period is an opportunity for hospitals to review the data for accuracy (i.e., identify recording errors, hospital name and address changes, etc.) on a secure website and review changes to the scoring algorithm.
- **Free Town Hall Call**: Hospitals and other stakeholders are invited to a free Town Hall Call to hear about changes to the measures and scoring methodology, as well as details of the Courtesy Safety Grade Review Period and important deadlines.
- **Letter Grade Embargo Period**: Following the close of the Courtesy Safety Grade Review Period, Leapfrog finalizes the data and establishes letter grade cut-points. The Safety Grade Review [website](#) is refreshed, and hospitals can participate in a Letter Grade Embargo Period in which they can preview their letter grade prior to the public announcement.
- **Public Announcement**: Following the Embargo Period, Safety Grades are published on Leapfrog's public [website](#).

# Reviewing Data Before Data Snapshot Dates

# Review Leapfrog Hospital Survey Results Prior to Each Data Snapshot Date

---

- The Leapfrog Hospital Survey is open from April 1 to November 30 of each year.
- Following the Submission Deadline on June 30, Survey Results are published monthly on a secure 'Hospital Details' [page](#) (starting July 12) and a public [website](#) (starting July 25). Hospitals are urged to review their Survey Results immediately.
- Corrections
  - Hospitals that identify any data entry or reporting errors are instructed to log back into the Survey to submit a correction. **Corrections must be submitted prior to the Data Snapshot Date.**
- Data Verification Messages:
  - Failure to resolve Data Verification messages by August 31 may impact your Safety Grade. More information on our data verification processes is available on our [website](#).

# NHSN Data Downloads

---

- Leapfrog has four NHSN data download dates per Survey Cycle. We do download NHSN data outside of these dates.
- 2023 Leapfrog Hospital Survey NHSN Data Download Dates:
  - June 23
  - **August 24**
  - October 24
  - December 21
- Hospitals are required to complete the following to ensure Leapfrog obtains the appropriate SIRs:
  - Review and accept the Data Rights Template annually and ensure that any locations that were active during the reporting period, even if they are currently inactive, are included
  - **Regenerate NHSN data and download copies of your CMS IQR reports and NHSN Annual Hospital Survey on the same dates as Leapfrog to save to your own records and to compare to the NHSN data Leapfrog uses for scoring.**

Instructions for generating datasets and downloading these reports from NHSN are available here:

<https://www.leapfroggroup.org/survey-materials/join-nhsn>

# Review CMS Data Prior to each the Data Snapshot Date

---

CMS administers several hospital-based reporting and payment programs including the Inpatient Quality Reporting Program, HAC Reduction Program, the DRA HAC Program, and Value-based Purchasing Program. Several measures collected and calculated by CMS via its various hospital-based programs are used in the Leapfrog Hospital Safety Grade (HAIs, HCAHPS, HAC, and PSI measures).

CMS provides hospitals with a 30-day confidential preview period **before** publishing performance data at <https://data.cms.gov/provider-data>.

More information is available at <https://qualitynet.org>.

# Fall 2023 Data Review Opportunities

---

- Survey Results have been available on the confidential [Hospital Details Page](#) since July 12 and have been publicly reported since July 25 for hospitals that submitted a Survey by June 30.
  - <https://ratings.leapfroggroup.org/>
- HCAHPS and HAI CMS data have been publicly available on Care Compare since July 26, 2023
  - <https://data.cms.gov/provider-data>
- The review period for the CMS HAC data that will be used in the fall 2023 Safety Grade was in June/July 2022
- The review period for the CMS PSI data that will be used in the fall 2023 Safety Grade was in Aug/Sep 2022



# Participating in the Courtesy Review Period

Screenshots taken from spring 2023 Safety Grade Review Website

Fall 2023 Review Period

Monday, September 25, 2023, to Friday, October 13, 2023

# Secure Website for Hospitals to Review their Safety Grade Data

<http://www.HospitalSafetyGrade.org/data-review>

Username and passwords are emailed to Leapfrog Hospital Survey participants and mailed to hospital CEO's. You can also retrieve your username and password via the Help Desk.

## Safety Grade Review Website for Hospitals

The spring 2023 Leapfrog Hospital Safety Grade Review Period will be open from February 21 – March 12. By accessing the Review Website, you will be able to:

1. Provide contact information for your hospital so we can send you important announcements about the Leapfrog Hospital Safety Grade.
2. Update your hospital's name, address, and CMS Certification Number.
3. Review the source data used to calculate your hospital's preliminary numerical score and validate that we have recorded the correct information using the Review Instructions and Scoring Methodology.
4. Download a copy of the Leapfrog Hospital Safety Grade Calculator®.
5. Preview your hospital's **preliminary** numerical score.

Following the Review Period, we will refresh this website to reflect any changes that occurred during the Review Period and finalize numerical scores. Hospital letter grades will be available during the Letter Grade Embargo Period following the close of the Review Period.

## Login

Username	<input type="text"/>
Password	<input type="password"/>
	<input type="submit" value="Submit"/>

# Contact Information

---

\*Is the hospital name and address displayed above correct?

- ☒ Info above is correct  
☐ Info above is NOT correct

\*Is the hospital's CMS Certification Number (CCN) **01-0139** correct?

- ☒ CCN is correct  
☐ CCN is NOT correct (If the CCN is not correct, please [contact the Help Desk](#) immediately.)

CEO First Name

CEO Last Name

CEO Email Address

Contact First Name

Contact Last Name

Contact Title

Contact Email Address

Contact Phone Number

# Source Data

## Safety Grade Review Website for Hospitals

### Hospital Source Data

#### Information About Source Data

The information in the table below represents your hospital's performance on each of the 22 measures used in the Hospital Safety Grade as of January 31, 2023 (the [Data Snapshot Date](#)). Please review this information to ensure that Leapfrog recorded the correct measure score from each publicly available data source.

Information that you will need to complete the review process is available in the following documents:

- [Review Instructions and Scoring Methodology](#)
- [Spring 2023 Hospital Safety Grade Calculator](#)

# Source Data

Name of the Measure	Type of Measure	Data Source/Links	Reporting Period	Measure Score
Computerized Physician Order Entry (CPOE)	Structure/ Process	Mean of Similar Hospitals	Not Applicable	75** ←
Bar Code Medication Administration (BCMA)	Structure/ Process	Mean of Similar Hospitals	Not Applicable	79**
ICU Physician Staffing (IPS)	Structure/ Process	<a href="#">2022 Leapfrog Hospital Survey</a>	2022	Declined to Report
~ ~				
C. Diff.	Outcome	<a href="#">2022 Leapfrog Hospital Survey</a>	07/01/2021 - 06/30/2022	2.066* ←
PSI 4: Death rate among surgical inpatients with serious treatable conditions	Outcome	<a href="#">CMS</a>	07/01/2019 - 12/31/2019 and 07/01/2020 - 6/30/2021	Not Available
CMS Medicare PSI 90: Patient safety and adverse events composite	Outcome	<a href="#">CMS</a>	07/01/2019 - 12/31/2019 and 07/01/2020 - 6/30/2021	1.06

**\*Trim value:** The measure score has been trimmed to the 99th percentile. Refer to A Note About Extreme Values in the [Review Instructions and Scoring Methodology](#).

**\*\*Imputed score:** The measure score has been imputed based on historical data or data from similar hospitals. Refer to Using Secondary Data Sources in the [Review Instructions and Scoring Methodology](#).

# PSI 90 Components – NOT used in scoring

## PSI 90 Components

CMS calculates PSI 90 using the ten (10) component PSIs that are listed in the table below. While the scores for each of the 10 component PSIs will NOT be used to calculate spring 2023 Hospital Safety Grades, they will be publicly reported on the Hospital Safety Grade [website](#). To verify your hospital's PSI 90 Component scores, use the text links in the Data Source/Links column.

Component PSI	Data Source/Links	Reporting Period	Component Score (not used in numerical score)
PSI 3: Pressure ulcer rate	<a href="#">CMS</a>	07/01/2019 - 12/31/2019 and 07/01/2020 - 6/30/2021	0.42
PSI 6: Iatrogenic pneumothorax rate	<a href="#">CMS</a>	07/01/2019 - 12/31/2019 and 07/01/2020 - 6/30/2021	0.22
PSI 8: In-hospital fall with hip fracture rate	<a href="#">CMS</a>	07/01/2019 - 12/31/2019 and 07/01/2020 - 6/30/2021	0.07

# What if the Measure Score Doesn't Match the Public Report?

---

Hospitals must **contact the Help Desk immediately** if they suspect a measure score is incorrect.

However, they should double check the following information **before** contacting the [Help Desk](#):

- **Data source** - the data source listed on the Safety Grade Review Website is what you are referring to when verifying your measure score. You should be using the direct links provided in your Source Data table. For example, if Leapfrog Hospital Survey is listed as the data source for the HAI measures, and you are referring to the CMS HAI data when verifying your measure score, it will not match because that data was not used.
- **Measure** - the measure listed on the Safety Grade Review Website is what you are referring to when verifying your measure score.
- **Reporting period** - the reporting period listed on the Safety Grade Review Website is what you are referring to when verifying your measure score.

When you contact the Help Desk about a potential discrepancy, you must include a copy of the public report or a screenshot that shows a different score for the measure. Please be sure the data source, measure name, and reporting period are visible in the screen shot.

If we find a recording error, we will update the measure score and numerical score before assigning a Letter Grade. You will see an updated numerical score during the Letter Grade Embargo Period.

# Preview Preliminary Numerical Score

Remember that the numerical scores posted during the Safety Grade Review Period are **preliminary** as changes do occur during the Safety Grade Review Period.

Final numerical scores will be posted, along with the letter grade, at least two weeks prior to the public announcement.

Hospitals will be alerted via an email sent to the addresses provided in the Contact and Reviewer Information fields.

My Score	My Letter Grade
2.9636	TBD
More Information	
<a href="#">Hospital Safety Grade Methodology</a> (1 PDF file)	
<a href="#">Hospital Safety Grade Calculator</a> (1 Excel file)	
<a href="#">Changes in Measure Weights</a> (1 PDF file)	

# Hospital Safety Grade Calculator

Measure Domain	Measure	Enter Your Hospital's Score Here (Do NOT Leave Blanks)	Mean	Standard Deviation	Z-Score <sup>1</sup>		Inputs to Weighting Individual Measures <sup>2</sup>				Weight <sup>3</sup>		Weighted Measure Score (Modified Z-Score x Final Weight)
					Original Z-Score	Modified Z-Score	Evidence	Opportunity	Impact	Number of Component Measures	Standard Weight	Final Weight (N/A redistributes)	
Process/Structural Measures	Computerized Physician Order Entry (CPOE)		85.73	22.55	-3.8022	-3.8022	2	1.26	3	1	5.9%	5.9%	-0.2226
	Bar Code Medication Administration (BCMA)		83.21	21.58	-3.8553	-3.8553	2	1.26	3	1	5.8%	5.8%	-0.2253
	ICU Physician Staffing (IPS)		62.75	43.31	-1.4488	-1.4488	2	1.69	3	1	7.2%	7.2%	-0.1036
	Safe Practice 1: Culture of Leadership Structures and Systems		116.84	7.46	-15.6601	-5.0000	1	1.06	2	1	3.2%	3.2%	-0.1582
	Safe Practice 2: Culture Measurement, Feedback, & Intervention		116.54	12.74	-9.1489	-5.0000	1	1.11	2	1	3.3%	3.3%	-0.1628
	Safe Practice 9: Nursing Workforce		98.18	7.06	-13.9022	-5.0000	1	1.07	3	1	4.3%	4.3%	-0.2132
	Hand Hygiene		74.37	32.80	-2.2677	-2.2677	2	1.44	2	1	4.9%	4.9%	-0.1120
	H-COMP-1: Nurse Communication		91.11	2.22	-40.9906	-5.0000	1	1.02	2	1	3.1%	3.1%	-0.1542
	H-COMP-2: Doctor Communication		91.00	2.11	-43.0334	-5.0000	1	1.02	2	1	3.1%	3.1%	-0.1541
	H-COMP-3: Staff Responsiveness		84.38	3.59	-23.4927	-5.0000	1	1.04	2	1	3.1%	3.1%	-0.1560
	H-COMP-5: Communication about Medicines		77.67	3.58	-21.6805	-5.0000	1	1.05	2	1	3.1%	3.1%	-0.1564
	H-COMP-6: Discharge Information		86.52	3.30	-26.1921	-5.0000	1	1.04	2	1	3.1%	3.1%	-0.1556
Outcome Measures	Foreign Object Retained		0.02	0.06	0.2977	0.2977	1	3.00	2	1	4.3%	4.3%	0.0128
	Air Embolism		0.0004	0.004	0.1071	0.1071	1	3.00	1	1	2.5%	2.5%	0.0026
	Falls and Trauma		0.42	0.38	1.1045	1.1045	2	1.91	3	1	4.7%	4.7%	0.0523
	CLABSI		0.81	0.67	1.2035	1.2035	2	1.83	3	1	4.6%	4.6%	0.0553
	CAUTI		0.75	0.57	1.3160	1.3160	2	1.76	3	1	4.5%	4.5%	0.0587
	SSI: Colon		0.80	0.65	1.2292	1.2292	2	1.81	2	1	3.4%	3.4%	0.0424
	MRSA		0.84	0.65	1.2856	1.2856	2	1.78	3	1	4.5%	4.5%	0.0578
	C. Diff.		0.54	0.36	1.4799	1.4799	2	1.68	3	1	4.3%	4.3%	0.0638
	PSI 4: Death rate among surgical inpatients with serious treatable conditions		159.71	18.33	8.7137	8.7137	1	1.11	2	1	2.0%	2.0%	0.1725
	CMS Medicare PSI 90: Patient safety and adverse events composite		1.00	0.19	5.1983	5.1983	1	1.19	2	10	15.2%	15.2%	0.7919
Process Measure Domain Score:		Will populate after entering all data.											
Outcome Measure Domain Score:		Will populate after entering all data.											
Process/Outcome Domains - Combined Score:		Will populate after entering all data.											
Normalized Numerical Score:		Will populate after entering all data.											
Hospital Safety Grade (Letter Grade):		Will not be calculated until after the Safety Grade Review Period. Hospitals will be notified via email when the letter grades are posted.											

# New in Fall 2023: Shortened Letter Grade Embargo Period

---

- The Letter Grade Embargo Period will be shortened from 2 weeks to 1 week
- Hospitals can log back into the Data Review Website to review their final numerical score and letter grade. Explanation of Letter Grades includes cut-points and distribution of grades.
- Fall 2023: Late October- Early November



# Public Reporting

*Screenshots taken from Safety Grade website  
reflect spring 2023 Safety Grades*

# HospitalSafetyGrade.org

[Join Our Mailing List](#) [Newsroom](#) [Donate Now](#)

LEAPFROG  
HOSPITAL  
SAFETY GRADE

[What is  
Patient Safety?](#) [Your Hospital's  
Safety Grade](#) [What You Can Do  
to Stay Safe](#) [For Hospitals](#) [Licensure  
& Permissions](#) [About  
Our Movement](#)

A program of  
THE LEAPFROG GROUP


A

B

C

D

F



## How Safe is Your Hospital?

Search below to find the spring 2023 Leapfrog Hospital Safety Grade of your general hospital.

Search By City/State

City

- Choose -


[Use My Location](#)

Search

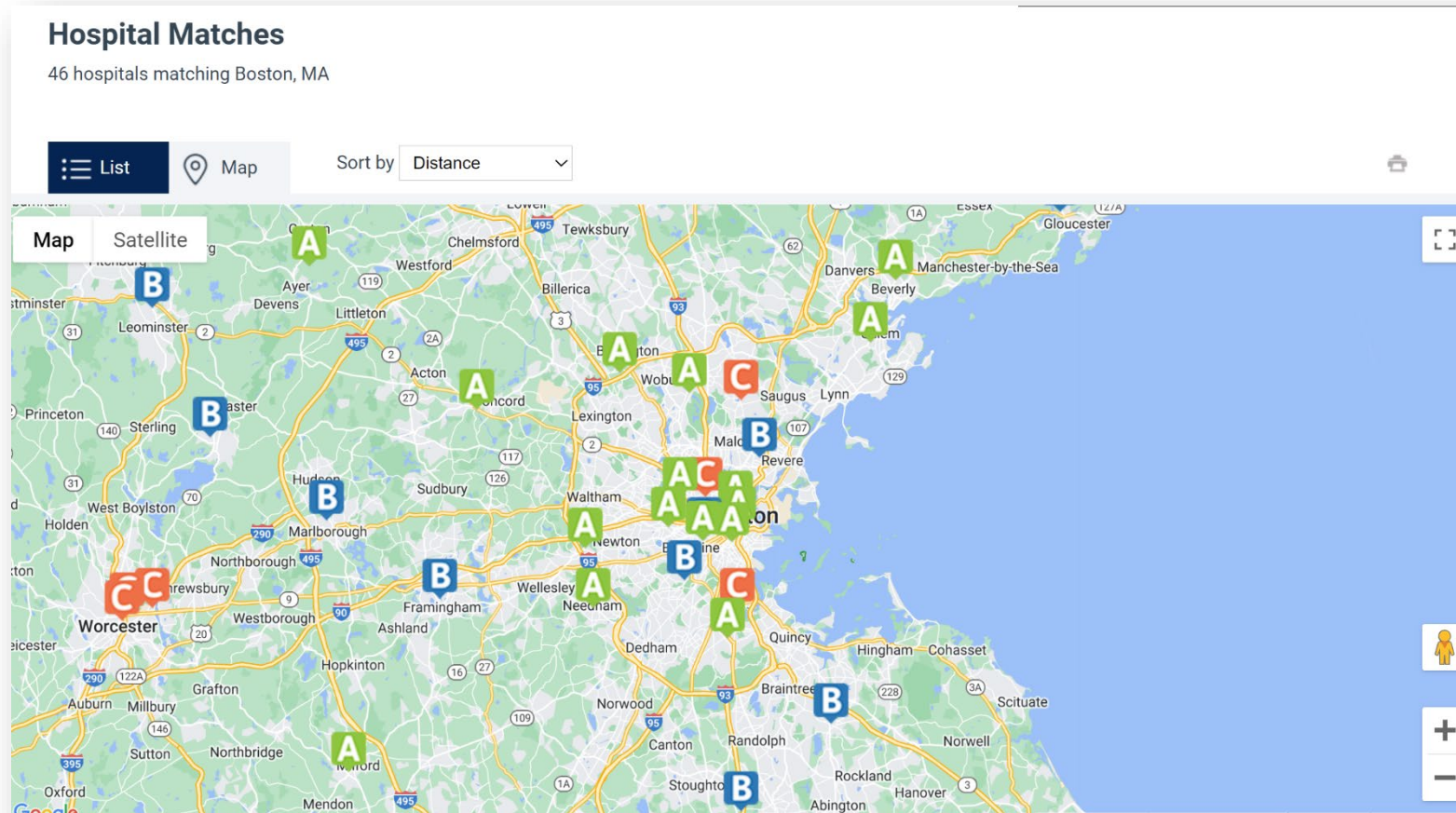
### Better Choices. Better Care. Saving Lives.

For more than 20 years, The Leapfrog Group has collected, analyzed, and published hospital data on safety and quality in order to push the health care industry forward. Leapfrog's bold transparency has promoted high-value care and informed health care decisions—and helped trigger giant leaps forward in the safety, quality, and affordability of U.S. health care.

Support us.



# Search by Hospital Name and Location



# Hospital Details

This Hospital's Grade



## Brigham And Women's Hospital

75 Francis Street  
Boston, MA 02115-6110

[Map and Directions](#)

[View this hospital's Leapfrog Hospital Survey Results](#)

► [Show Recent Past Grades](#)

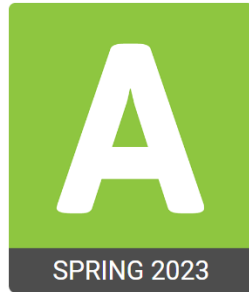
[Detailed table view](#)

Learn how to use the Leapfrog Hospital Safety Grade



# Past Grades

This Hospital's Grade



## Brigham And Women's Hospital

75 Francis Street  
Boston, MA 02115-6110

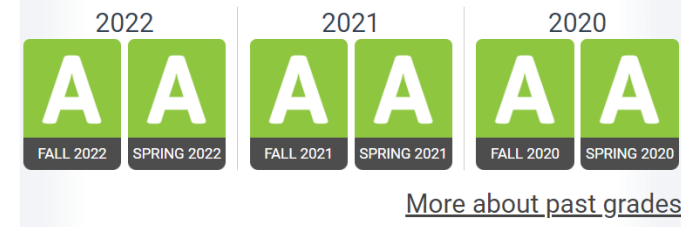
[Map and Directions](#)

[View this hospital's Leapfrog Hospital Survey Results](#)

Learn how to use the Leapfrog Hospital Safety Grade



▼ [Hide Recent Past Grades](#)

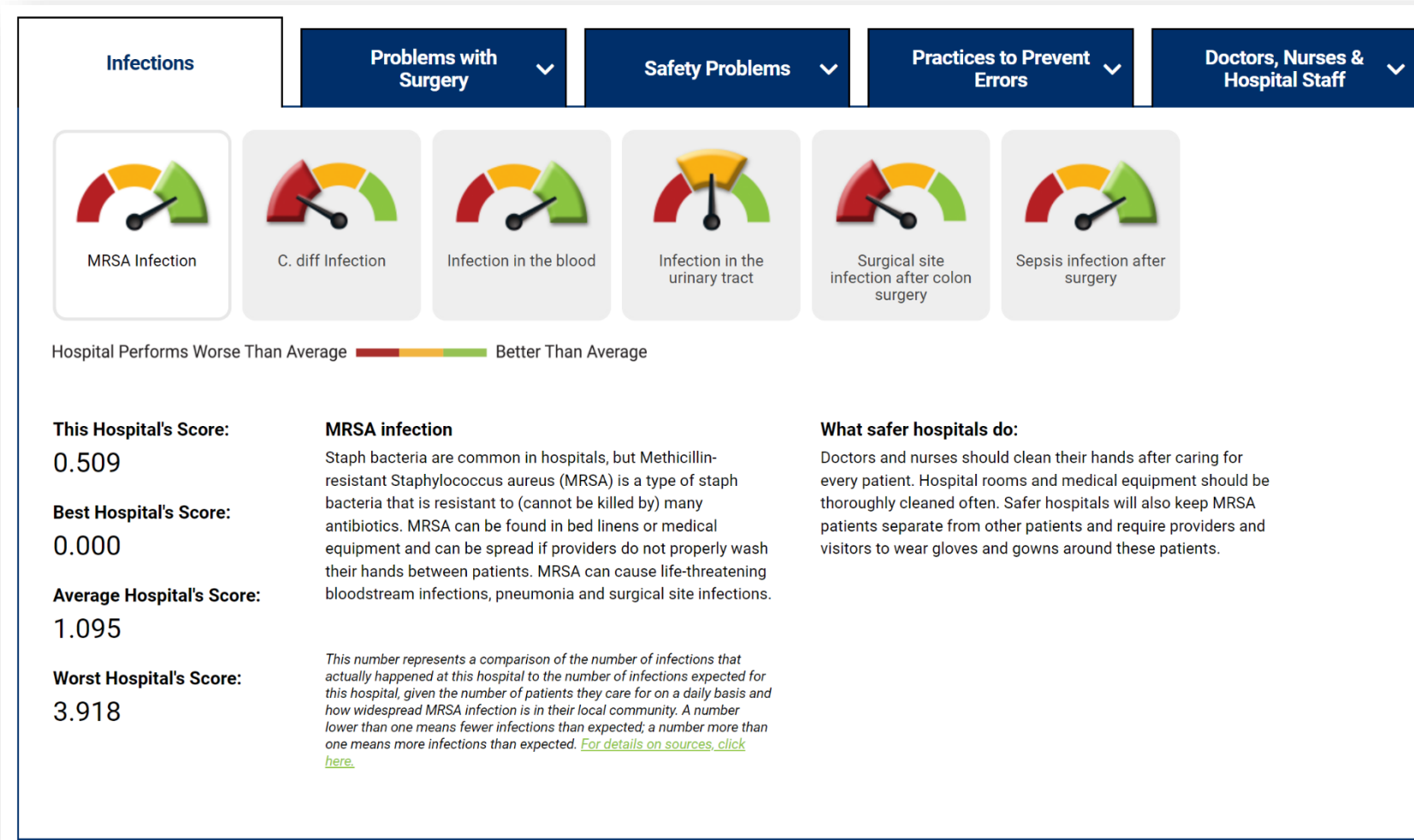


[Detailed table view](#)

# Detailed Table View for Hospitals

<div> <div> This Hospital's Grade </div> <div>  <div> <b>Brigham And Women's Hospital</b>  75 Francis Street  Boston, MA 02115-6110  <a href="#">Map and Directions</a> </div> </div> </div>						
Outcomes measures include errors, accidents, and injuries that this hospital has publicly reported.						
Measure	The Hospital's Score	Worst Performing Hospital	Avg. Performing Hospital	Best Performing Hospital	Data Source	Time Period Covered
Dangerous object left in patient's body <a href="#">What's This?</a>	0.049	0.352	0.015	0.000	CMS	07/01/2019 - 12/31/2019 and 07/01/2020 - 06/30/2021
Air or gas bubble in the blood <a href="#">What's This?</a>	0.000	0.358	0.001	0.000	CMS	07/01/2019 - 12/31/2019 and 07/01/2020 - 06/30/2021
Patient falls and injuries <a href="#">What's This?</a>	0.345	2.229	0.437	0.000	CMS	07/01/2019 - 12/31/2019 and 07/01/2020 - 06/30/2021
Infection in the blood <a href="#">What's This?</a>	0.666	4.462	1.077	0.000	2022 Leapfrog Hospital Survey	07/01/2021 - 06/30/2022
Infection in the urinary tract <a href="#">What's This?</a>	0.882	3.516	0.862	0.000	2022 Leapfrog Hospital Survey	07/01/2021 - 06/30/2022
Surgical site infection after colon surgery <a href="#">What's This?</a>	1.450	3.117	0.822	0.000	2022 Leapfrog Hospital Survey	07/01/2021 - 06/30/2022
MRSA Infection <a href="#">What's This?</a>	0.509	3.918	1.095	0.000	2022 Leapfrog Hospital Survey	07/01/2021 - 06/30/2022
C. diff. Infection <a href="#">What's This?</a>	0.537	2.066	0.489	0.000	2022 Leapfrog Hospital Survey	07/01/2021 - 06/30/2022

# Measure Scores



# Not Graded



## Saint John Hospital

3500 S. Fourth Street  
Leavenworth, KS 66048-5043

[Map and Directions](#)

[View this hospital's Leapfrog Hospital Survey Results](#)



# Important Dates for Fall 2023

---

**August** - Leapfrog finalized updates to the fall 2023 Hospital Safety Grade Methodology

**August 31** - Data Snapshot Date

**September 25 - October 13** - Courtesy Hospital Safety Grade Review Period

**September 28** - Hospital Safety Grade Town Hall Call

**Late October/November** – One week Letter Grade Embargo Period

**Early November** - Letter grades will be published at [www.HospitalSafetyGrade.org](http://www.HospitalSafetyGrade.org)

For more information about important dates, visit:

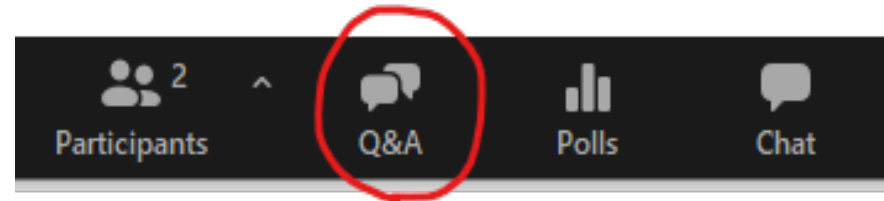
<https://www.hospitalsafetygrade.org/for-hospitals/key-dates-and-information>

# Questions Break

---



Reminder – Use the Q&A Feature:



For questions specific to your hospital or questions that come up later, please contact the Leapfrog Help Desk: <https://leapfroghelpdesk.zendesk.com>